

Quarter one (Q1) of 2021/22 (April 1 – June 24, 2021)

Quarterly Surveillance Report

Please read the technical notes at the end of this report for definitions, methodology and considerations for interpretation of results



PICNet wishes to acknowledge with gratitude that we work and live on the traditional, ancestral and unceded territories of many B.C. First Nations who have cared and nurtured this land for all time.

PICNet's office in Vancouver is located on the traditional land of the x^wməθk^wəyəm (Musqueam), Skwxwú7mesh (Squamish), and səliłwətał (Tsleil-Waututh) Nations.

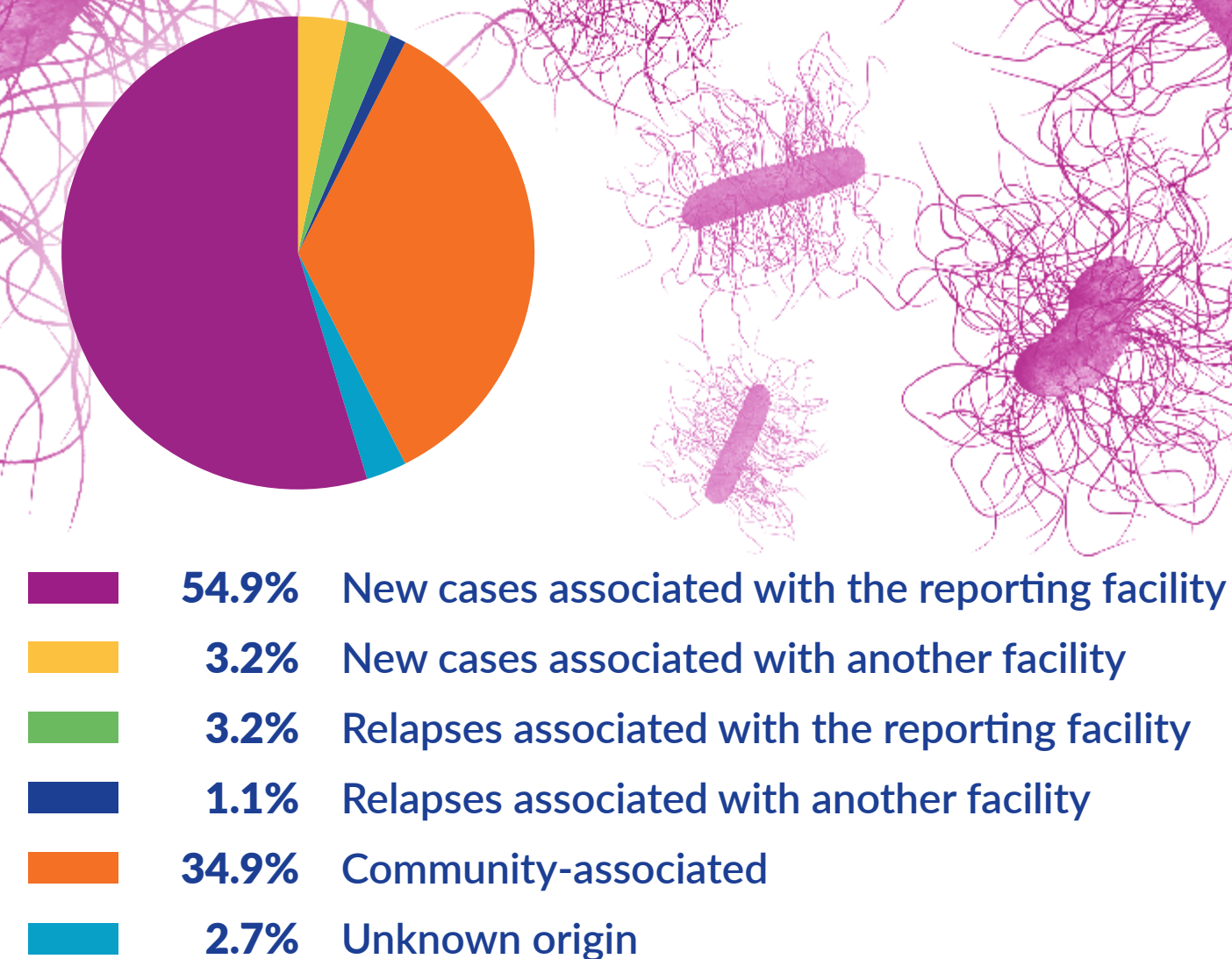
We also acknowledge that there are other Indigenous people that live on these lands that originate from their own respective territories outside of these lands, the Chartered Communities of the Métis Nation B.C., and Inuit.

Clostridioides difficile Infection (CDI)

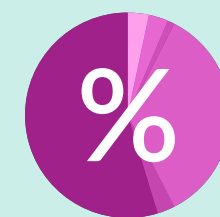
CDI is the most common health-care-associated infection. CDI usually causes diarrhea and mostly occurs during or soon after treatment with antibiotics or among people who are immunocompromised.

New cases and relapses identified among inpatients in acute care facilities are under provincial surveillance.

Distribution (%) of CDI episodes reported in acute care facilities by classification, Q1 of 2021/22 (n = 375)



HIGHLIGHTS

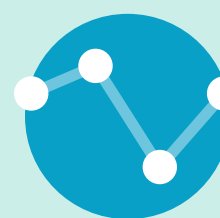


54.9% of episodes were new cases associated with the reporting facility



3.0 per 10,000 inpatient days

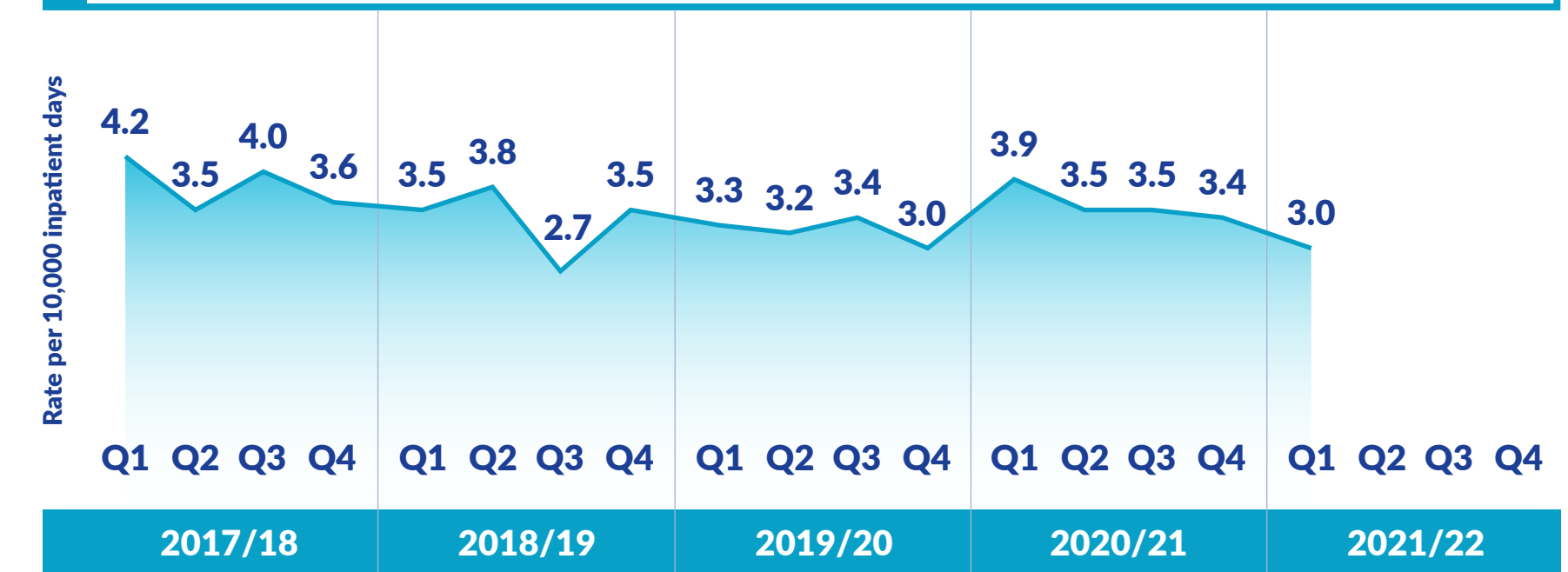
Quarterly provincial rate of new cases associated with the reporting facility



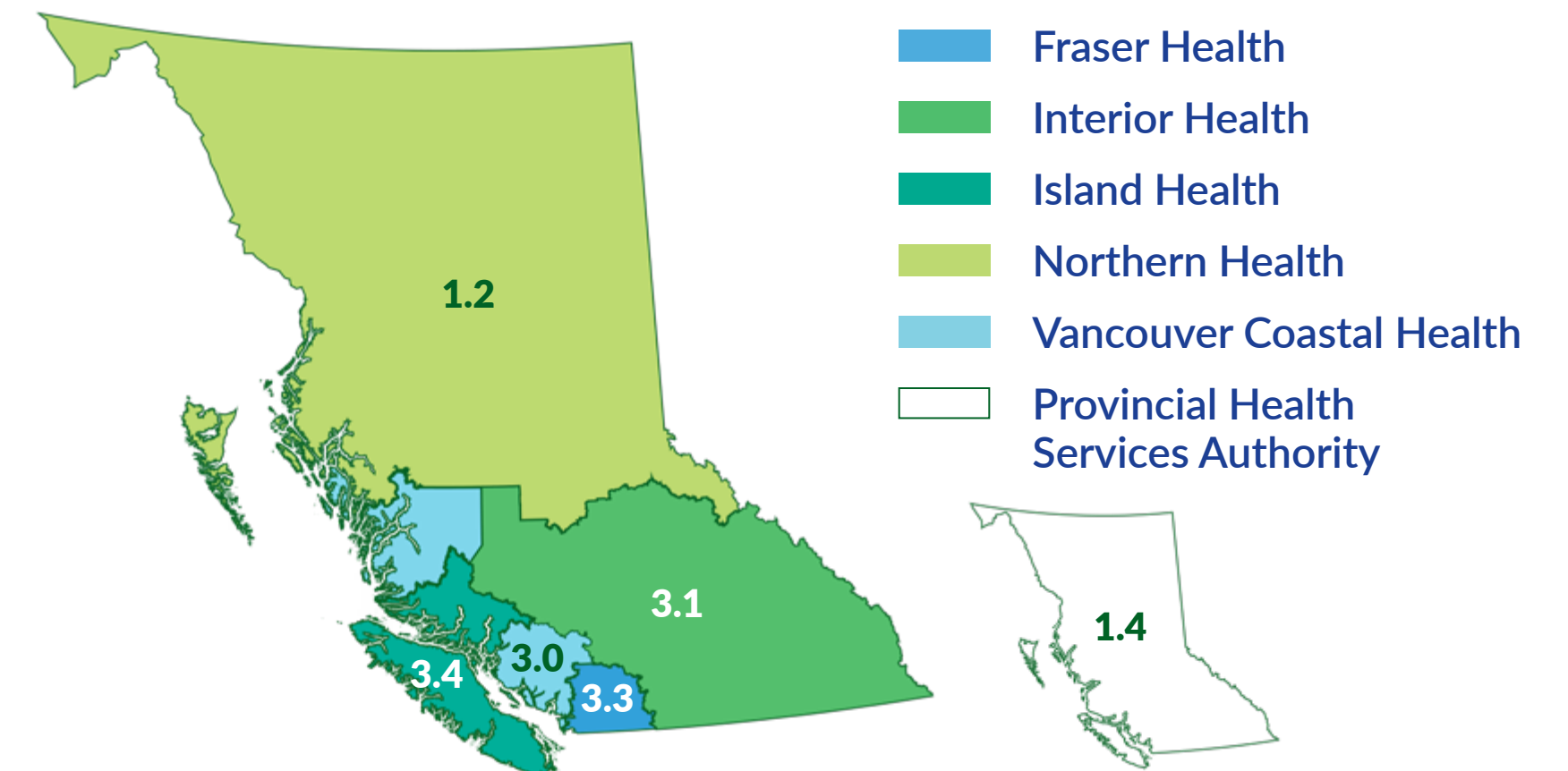
Provincial rates have fluctuated

2.7 – 4.2 per 10,000 inpatient days over the past five years

Provincial rate of new CDI cases associated with the reporting facility, by fiscal year and quarter, 2017/18 – 2021/22



Rate of new CDI cases (per 10,000 inpatient days) associated with the reporting facility by health authority, Q1 of 2021/22



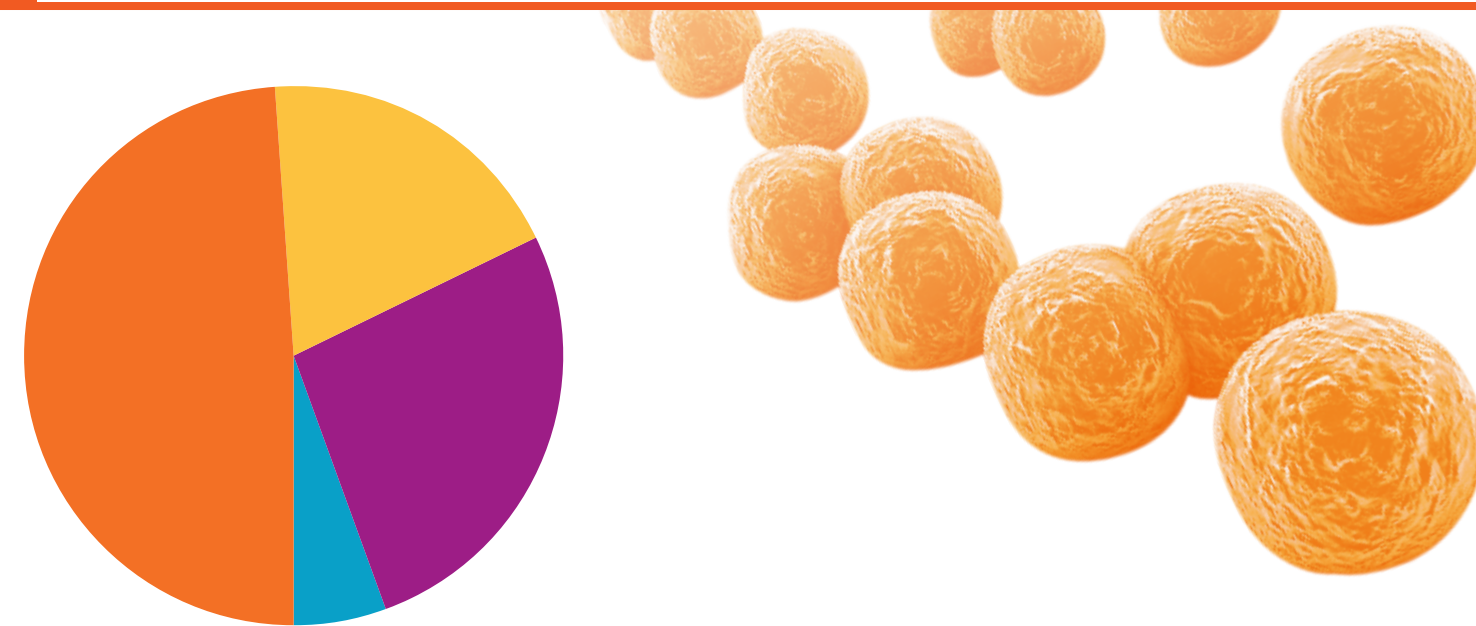
⚠ Comparisons across health authorities should be avoided due to variations in applying the provincial surveillance protocol, case finding strategies, patient demographics and risk profile and services provided.

Methicillin-resistant *Staphylococcus aureus* (MRSA)

MRSA is a type of bacteria that is resistant to many antibiotics. MRSA often lives on the skin or in the nose of healthy people without causing symptoms (colonization). It can, however, cause pneumonia, bloodstream infections, surgical site infections, and other infections associated with invasive medical procedures and devices.

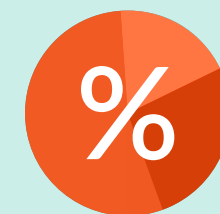
MRSA cases (colonization or infection) identified for the first time from inpatients in acute care facilities are under provincial surveillance.

Distribution (%) of new MRSA cases reported in acute care facilities by classification, Q1 of 2021/22 (n = 476)



- **48.9%** Associated with the reporting facility
- **18.9%** Associated with another facility
- **26.7%** Community-associated
- **5.5%** Unknown origin

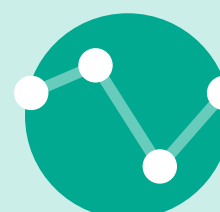
HIGHLIGHTS



48.9%
 New cases associated with the reporting facility

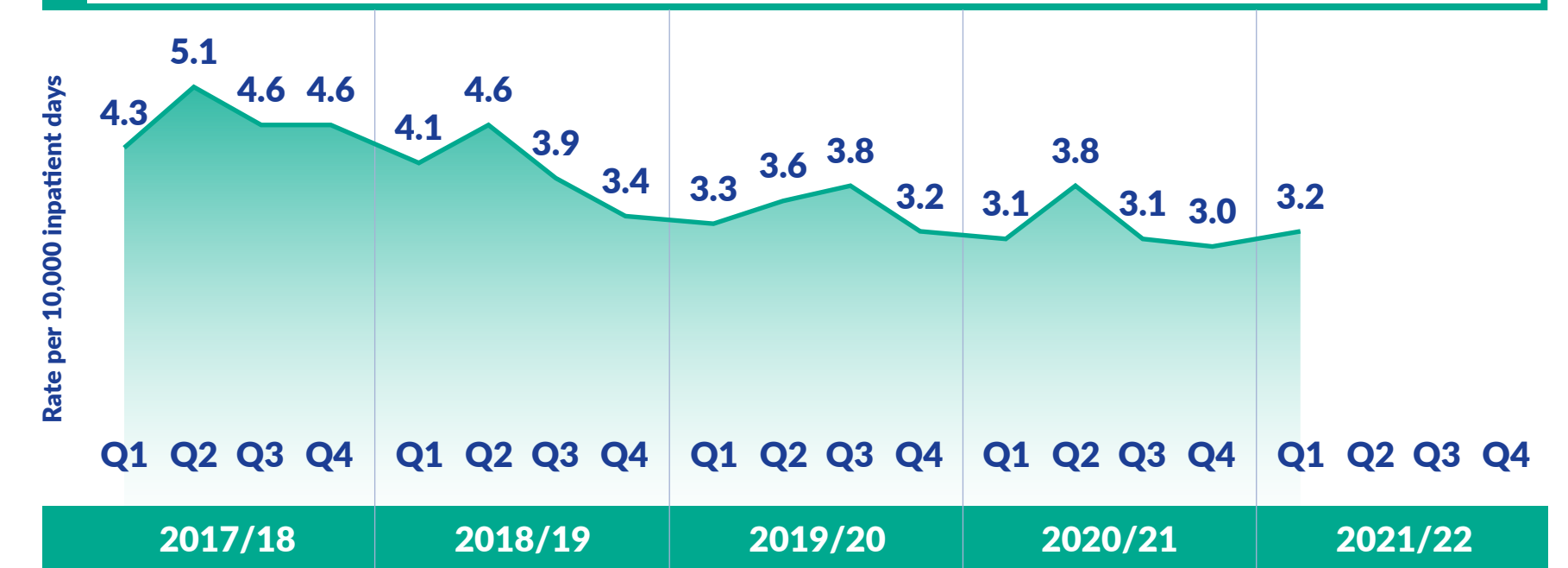


3.2 per 10,000 inpatient days
 Quarterly provincial rate of new cases associated with the reporting facility

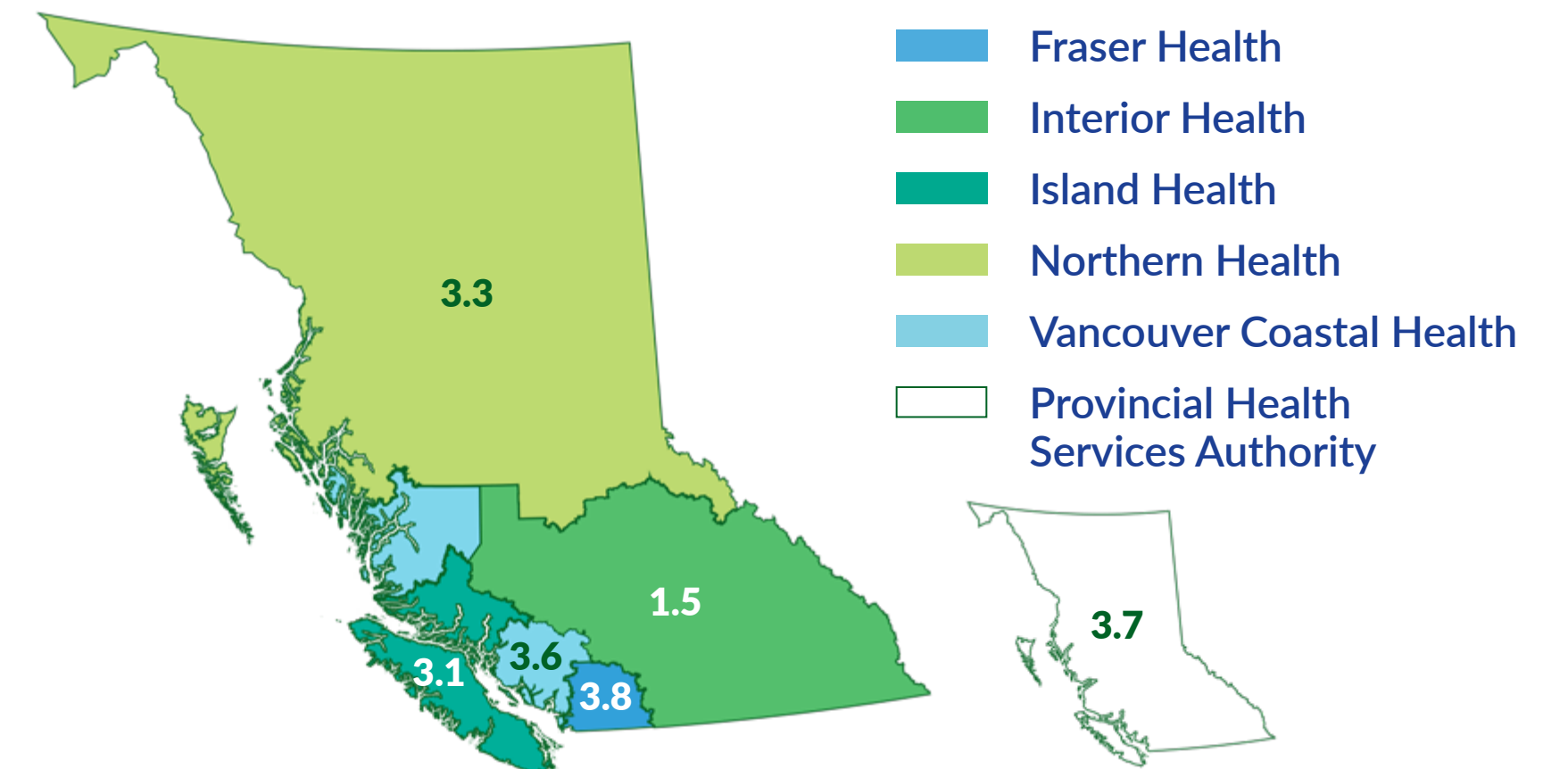


Provincial rates have fluctuated
 3.0 – 5.1 per 10,000 inpatient days over the past five years

Provincial rate of new MRSA cases associated with the reporting facility, by fiscal year and quarter, 2017/18 – 2021/22



Rate of new MRSA cases (per 10,000 inpatient days) associated with the reporting facility by health authority, Q1 of 2021/22



⚠ Comparisons across health authorities should be avoided due to variations in applying the provincial surveillance protocol, case finding strategies, patient demographics and risk profile and services provided.

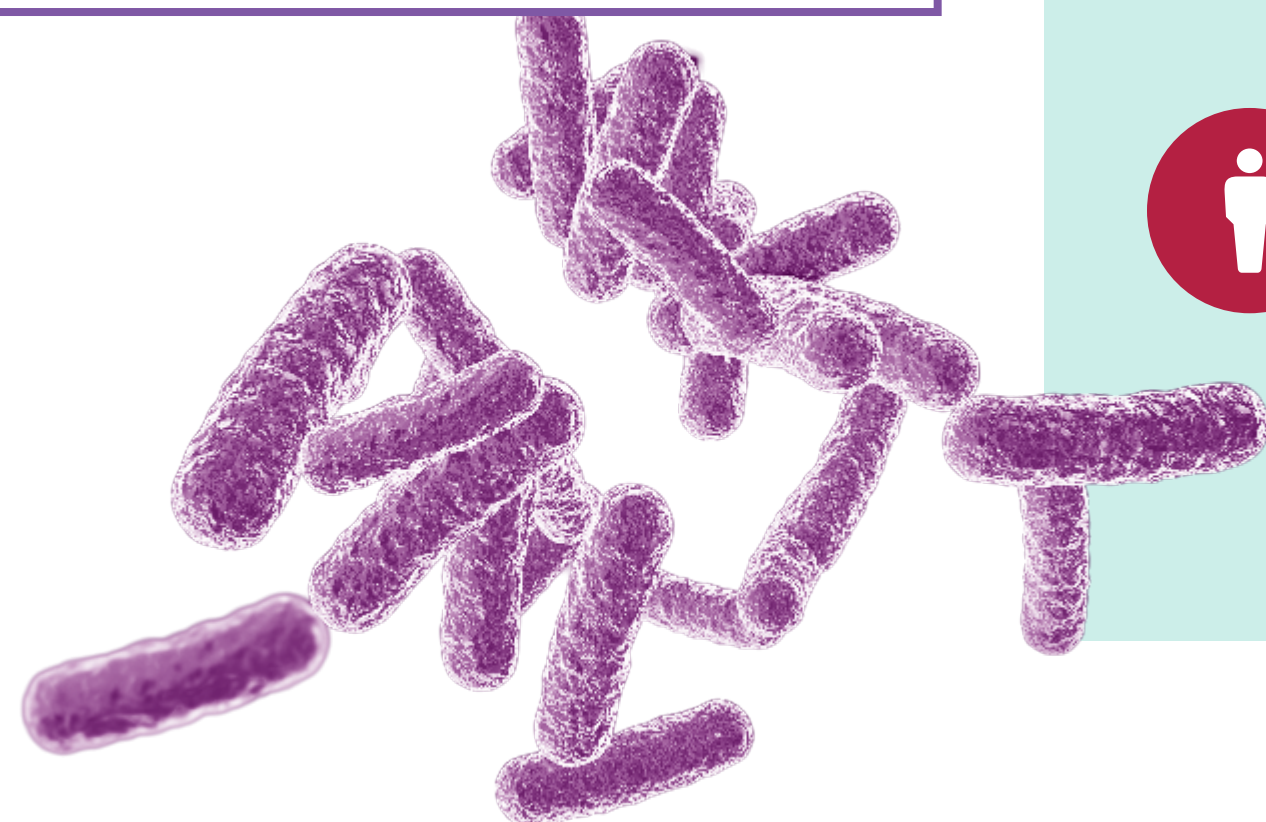
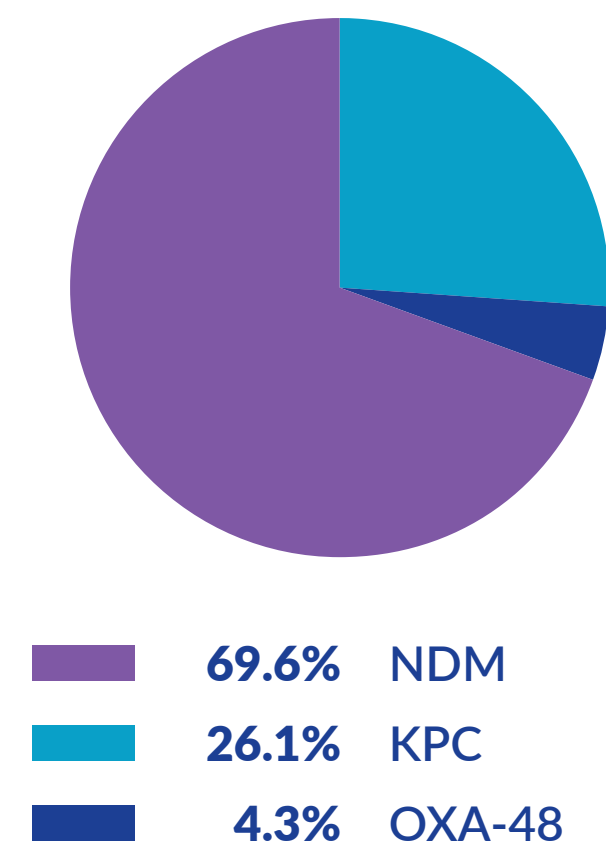
Carbapenemase-Producing Organisms (CPO)

CPO are bacteria often naturally found in the gut that have become resistant to carbapenems, a class of broad spectrum antibiotics usually reserved to treat serious infections when other antibiotics have not worked. When spread from the gut to other parts of the body such as the blood, lungs, or bladder, these multi-drug-resistant bacteria can cause infections that are difficult to treat.

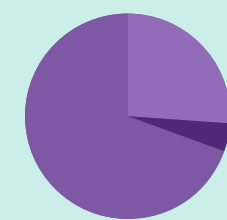
Each carbapenemase gene newly identified from a given patient with CPO colonization or infection is considered a new case. CPO cases are reportable to public health in B.C.

Distribution of new CPO cases by gene, Q1 of 2021/22

(n = 23)

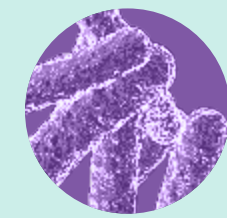


HIGHLIGHTS



23 new cases

Identified from 23 patients



NDM

Most commonly identified gene



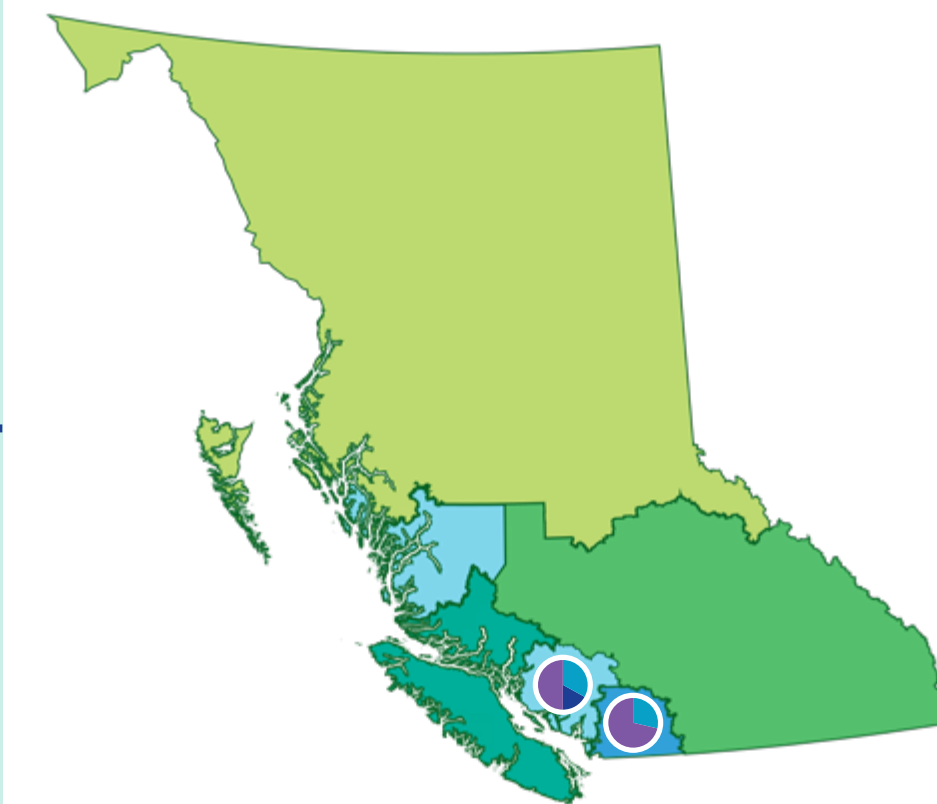
1 of 13 new cases

(With surveillance information available)

Had a health-care encounter outside Canada

Number of new CPO cases identified in acute care facilities by health authority, Q1 of 2021/22

(n = 13 cases)*

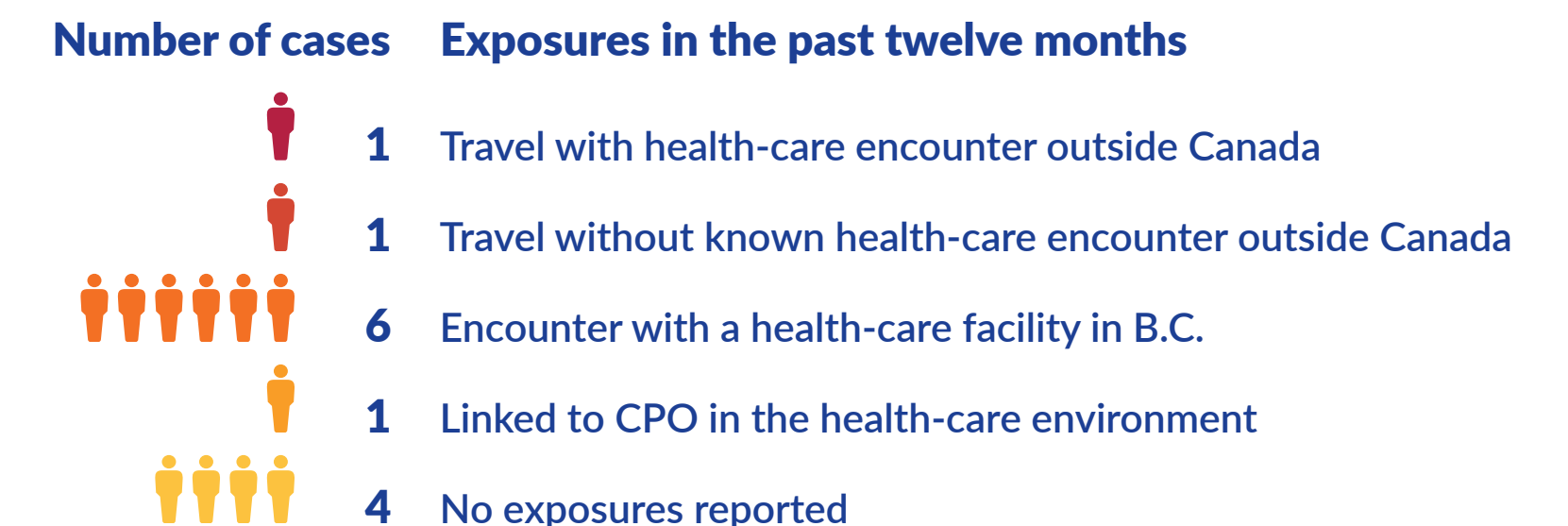


Health Authority	Total Cases	NDM	KPC	OXA-48
Fraser Health	6	4	2	0
Interior Health	0	0	0	0
Island Health	0	0	0	0
Northern Health	0	0	0	0
Vancouver Coastal Health	7	3	3	1
Provincial Health Services Authority	0	0	0	0

⚠ Comparisons across health authorities should be avoided due to variations in population at risk and screening policy for CPO.

There was no surveillance information available for new CPO cases identified in community care settings in Q1 of 2021/22.

Exposure information** for new CPO cases, Q1 of 2021/22 (n = 13 cases)*

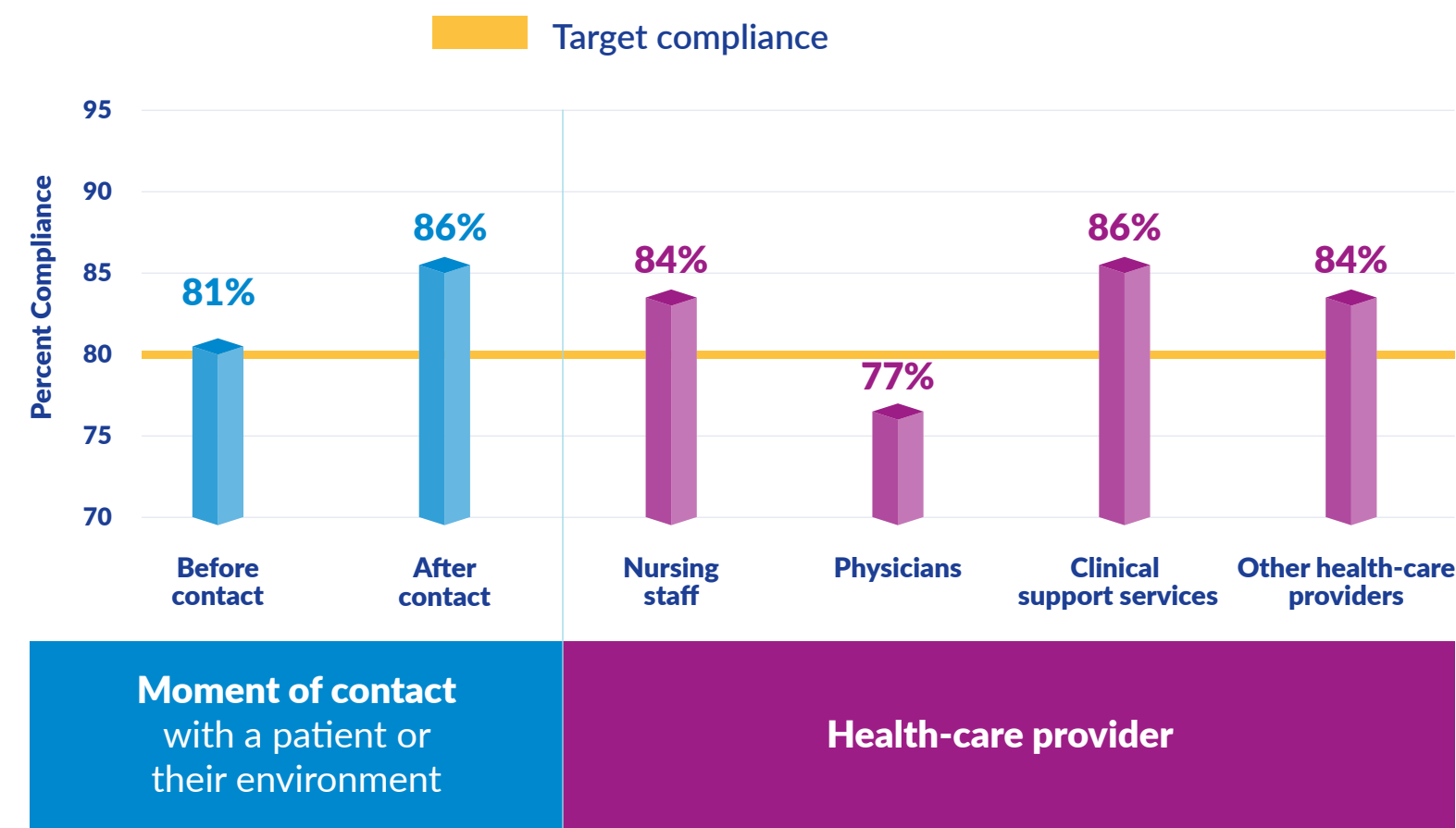


* With surveillance information available
** Exposures are not mutually exclusive

Hand-Cleaning Compliance

Improving hand-cleaning compliance among health-care providers is key to reducing health-care-associated infections. Reporting on compliance provides transparency to the public and assists health-care facilities in quality improvement.

Hand-cleaning compliance in acute care facilities by moment of contact and health-care provider, Q1 of 2021/22



HIGHLIGHTS

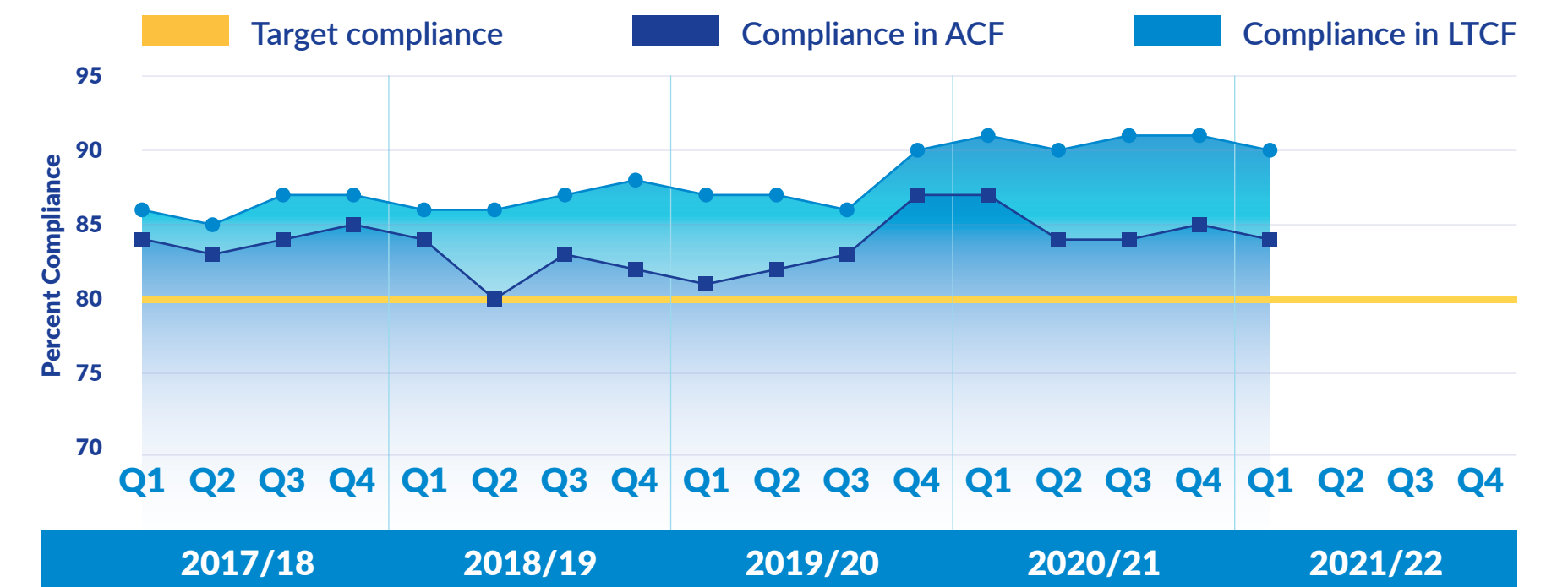
Overall provincial hand-cleaning compliance **exceeded the target of 80%** in both acute care facilities and long-term care facilities

Compliance before and after contact with the patient and the patient's environment in acute care facilities met the target

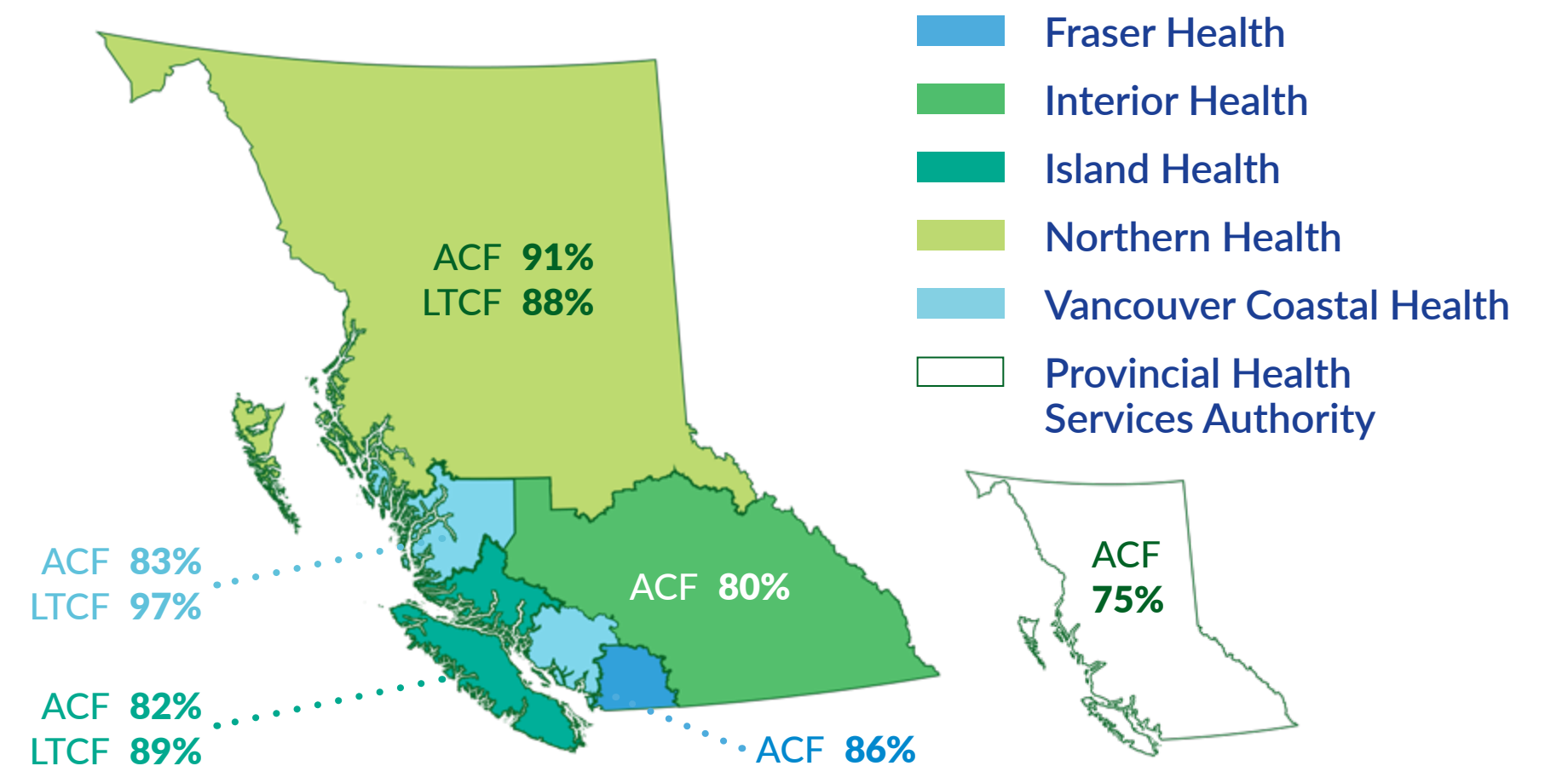
Compliance among physicians in acute care facilities did not meet the target

⚠ Comparisons across health authorities and facility types should be avoided due to potential observer bias, Hawthorne effect, and variations in audit methods.

Provincial hand-cleaning compliance among health-care providers in acute care facilities (ACF) and long-term care facilities (LTCF) by quarter and year, 2017/18 – 2021/22



Hand-cleaning compliance by health authority, Q1 of 2021/22



1. The provincial surveillance program for infection prevention and control (IPAC) is a collaboration between PICNet and B.C. health authorities. Provincial surveillance protocols for *Clostridioides difficile* infection (CDI), Methicillin-resistant *Staphylococcus aureus* (MRSA) and Carbapenemase-producing organisms (CPOs) are available on the PICNet website: picnet.ca/surveillance.
2. Provincial surveillance data for CDI, MRSA and hand-cleaning compliance are collected by health authorities, aggregated by health-care facility and quarter, and reported to PICNet. Provincial surveillance data for CPO are submitted to PICNet at the case level by health authorities or care providers in community care settings.
3. Data are presented by fiscal quarter, as defined by financial departments across health authorities. The exceptions are CDI, MRSA and hand-cleaning compliance data from Provincial Health Services Authority and hand-cleaning compliance data from Interior Health, which are aggregated by calendar quarter. The time frame of each fiscal quarter varies by fiscal year. Generally, the fourth fiscal quarter (Q4) is longer than the other three quarters (Q1, Q2, and Q3).
4. CDI episodes and new MRSA cases are classified as health-care-associated or community-associated according to patients' encounters with a health-care facility in the previous four weeks (CDI) or 12 months (MRSA).
5. Health-care-associated CDI episodes among inpatients in acute care facilities are further classified as new cases or relapses based on the time frame of the episodes. A relapse may include recurrence of a previous CDI, re-infection with the same strain, or infection with a different strain of *C. difficile* that occurs between two and eight weeks after a previous health-care-associated CDI episode.
6. CDI episodes among inpatients in acute care facilities that are classified as community-associated include both new cases and relapses.
7. A new MRSA case is defined as a colonization or infection identified for the first time in an inpatient in an acute care facility. MRSA infections identified in inpatients with previous MRSA colonization are not included.
8. CPO infections and colonizations are reportable to public health in B.C. All CPO-suspect isolates are required to be sent to BC Centre for Disease Control Public Health Laboratory (PHL) for molecular testing and genotyping. CPO testing results are then obtained from the PHL's laboratory information system.
9. A new CPO case is defined as a carbapenemase gene that was identified for the first time from a given patient in the province. Different genes identified from the same patient are considered different cases.
10. Surveillance forms are required to be completed for new CPO cases (colonizations and infections) identified in both acute and community care settings and submitted to PICNet by health authorities or health-care providers in community care settings, such as outpatient clinics, emergency departments, long-term care or assisted living facilities and community clinics.
11. New CPO cases are reported based on where they were identified and reported, i.e. acute care facility in a health authority or community care setting.
12. Exposure information collected on CPO surveillance forms includes: travel outside Canada, health-care encounters outside Canada and within B.C., ongoing CPO transmission investigation in a patient care unit, and contact with a known CPO case or CPO in the environment in the previous twelve months. These exposures are not mutually exclusive.
13. Hand-cleaning compliance is audited by health authorities. The percentage score reports how often, during an audit, health-care providers clean their hands before and after contact with a patient or the patient environment, such as changing bed linen, touching a bed rail or clearing a bedside table.

14. The expectation for hand-hygiene compliance is 100% for both before and after contact with the patient and patients' environment for each health-care provider group. The provincial target of 80%, established by the Provincial Hand Hygiene Working Group, is a minimum standard health authorities should meet while striving for continuous quality improvement.
15. In acute care facilities, trained auditors observe a sample of health-care providers and record whether they clean their hands at the appropriate times.
16. Health-care providers in ACFs are grouped into four categories:
 - 1) Nursing staff, including registered nurse, midwife, licensed practical nurse, care aide, and nursing/midwife student
 - 2) Physician, including medical doctor, resident, fellow, and medical student
 - 3) Clinical support services, including occupational therapist, physiotherapist, respiratory therapist, speech therapist, social worker, dietician, psychologist, audiologist, porter, pastoral care, radiologist, and technician (e.g., ECG, EEG, phlebotomy)
 - 4) Other, including house keeping, food services, clerk, volunteer, and security
17. Hand-cleaning compliance is audited in long-term care facilities (LTCFs) that are owned or operated by a health authority. Audit data are voluntarily reported by health authorities to PICNet for public reporting.
18. Hand-cleaning compliance audits were suspended in some health-care facilities due to the COVID-19 pandemic response. Compliance data in all LTCFs in Interior Health are not available for Q1 of 2021/22.
19. From Q2 of 2018/19 onwards, Fraser Health only reported observations performed by regional hand-hygiene auditors in acute care facilities to PICNet. As a result, compliance data are unavailable for all LTCFs in Fraser Health.
20. There are no LTCFs owned or operated by Provincial Health Services Authority. Provincial Health Services Authority's hand-cleaning compliance audit methods were modified during Q1 of 2021/22.
21. Hand-cleaning compliance is audited through direct observation in both acute care facilities and LTCFs; however, audit strategies and methods vary across health authorities and over time. Auditors are trained by health authorities and include dedicated hand-hygiene auditors or coordinators, infection prevention and control professionals, university co-op students, and staff within health-care facilities (self-auditing). Observer bias and Hawthorne effect (i.e. behaviour changes due to awareness of being observed) may occur during auditing.
22. For more details on surveillance methods and data limitations, please refer to the most recent annual surveillance report at picnet.ca/surveillance.



There is variation across health authorities in applying the provincial surveillance protocols, case finding strategies, patient mix and services provided as well as hand-cleaning compliance audit methods. Therefore, comparison of numbers or rates of CDI, MRSA, or CPO, or hand-cleaning compliance between health authorities should be avoided.

DISCLAIMER

The purpose of this report is to provide information to health-care providers, decision-makers, patients, and the public to inform IPAC policy and practice in B.C. health-care facilities. This report may be used, in whole or in part, for quality improvement and patient safety. PICNet does not warrant or assume any legal liability or responsibility for the accuracy, completeness, or usefulness of any information in the report; neither does it intend to provide specific medical advice. Commercial uses are prohibited without express written permission.