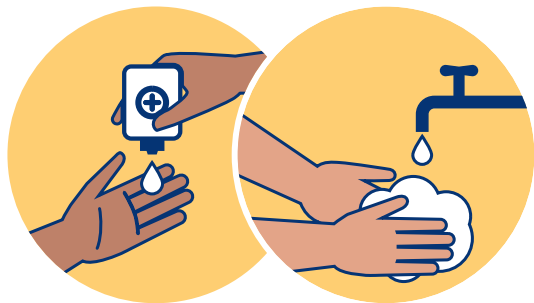


Help us prevent the spread of infections



**Clean hands
before and after visiting.**

Use hand sanitizer
or soap and water.

Visitors* and health-care workers

A medical mask is required
upon entering the facility and
in patient care areas.



Please use the mask provided.

.....
**Please stay home
if you are sick —**

experiencing cough, fever/chills,
sore throat, shortness of breath,
vomiting, or diarrhea.



Patients

A medical mask is required
in waiting areas and the emergency
department, and when asked by
a health-care provider.

Please use the mask provided.

**In long-term care and assisted living, the care team/staff will provide guidance on when visitors can remove their medical masks.*

2023.10.06