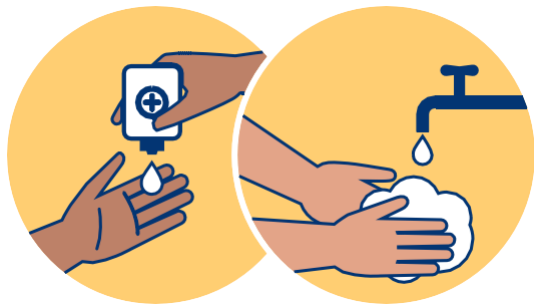


# Help us prevent the spread of infections



## Clean hands before and after visiting.

Use hand sanitizer or soap and water.

## Visitors\* and Health Care Workers

### A medical mask is required

in patient care areas, emergency departments, and waiting areas.



### Please use the mask provided.

### Please stay home if you are sick —

e.g., experiencing cough, fever/chills, sore throat, shortness of breath, vomiting, or diarrhea.



## Patients

### A medical mask is required

in waiting areas, emergency departments, and when asked by a health care provider.

### Please use the mask provided.

*\*In long-term care and assisted living, the care team/staff will provide guidance on when visitors can remove their medical masks.*

2025.01.06